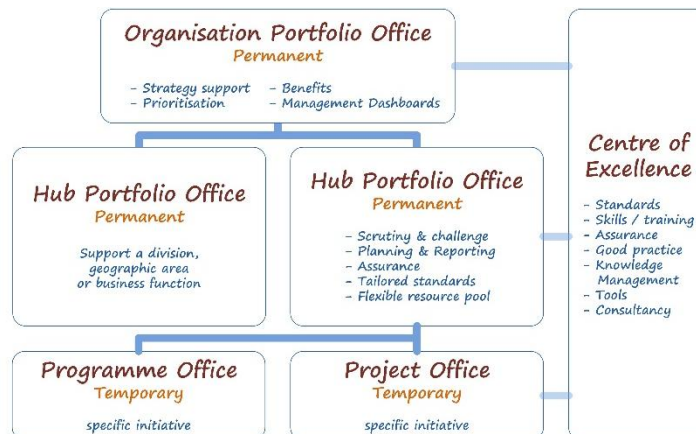


Inspiring P30® Training

About P30

P30 is an acronym of *Portfolio Programme and Project Offices*. The P30 guidance, through principles, processes and techniques, provides a model for support structures for projects, programmes and enterprise project portfolios. Having an effective P30 model will provide an organisation with decision enabling information as well as structures for delivering change. P30 pools together best practice on support offices for projects, programs and portfolios.



About Inspiring Projects

Inspiring Projects, a division of Aspire Australasia Pty Ltd, has been recognised by APMG International as an Accredited Training Organisation, licensed to deliver training in P30 and other Best Management Practice products. We offer training throughout the Asia Pacific region. We have had over 10 years' experience in using elements of P30 in real programmes and projects, and bring this deep experience to our courses.

About our training

Our P30 training is designed to assist people and organisations to quickly develop the skills base and 'know-how' needed to effectively adopt and apply P30. Our trainers and training materials are regarded as among the best available in Australasia. We incorporate the latest research in effective learning into our approaches. In support of the different ways people learn, our courses include a mixture of presentations, hands-on activities, discussions and review sessions. After their courses, our delegates are given access to the tools we have developed to increase the success of our clients' support offices. In addition to our accredited Foundation and Practitioner courses, we offer associated executive briefings and short courses, and workshops on specific skills needed in a support office environment.

Additional support

We can deliver any of our courses in-house, and customise our courses to better suit your needs. We also provide ongoing coaching and mentoring support, as well as in-depth consulting and project start-up, review and rescue services.

Contact us

To learn more about how P30 and our services can benefit you, or to register on one of our courses, or to ask for more information or a quote, call us now on 03 9015 9459, email training@InspiringProjects.com.au or visit www.InspiringProjects.com.au.

P3O Combined Foundation and Practitioner Course

Course Code	P3OC5
Overview	<p>A Project, Programme and Portfolio Office (P3O) model provides a decision enabling/delivery support structure for all change within an organisation. A P3O Model could consist of a single permanent office or be implemented as a linked set of permanent or temporary offices.</p> <p>This course comprises five days of trainer-led instruction, and practical exercises, with the Foundation examination on day three of the course and the Practitioner examination on day five.</p>
Course Objectives	<p>The Foundation course will enable delegates to:</p> <ul style="list-style-type: none"> • Articulate an overview of different ways the P3O can add value; • Recall and understand key reasons and benefits required to get senior management approval for the P3O; • Identify the different P3O models and the need to adapt to the organisation's needs, taking account of the organisation's size and Portfolio Programme and Project Management Maturity; • Identify the key elements of a plan to either implement or re-energise a P3O; • Recall the different purposes of a range of tools and techniques required in the P3O. <p>The Practitioner course will enable delegates to:</p> <ul style="list-style-type: none"> • Build on their Foundation-level understanding of the principles and terminology of P3O best practice and be able to demonstrate that they have a full understanding of how to justify, build and manage a P3O; • Define the business case to get senior management approval for the P3O; • Build the right P3O model to adapt to the organisation's needs, taking account of its size and Portfolio Programme and Project Management maturity; • Plan the implementation of a P3O; • Understand how to use the tools and techniques described in P3O in running the P3O model and shaping the portfolio of programmes and projects. <p>Delegates will be fully prepared for the Foundation and Practitioner exams.</p>
Who Should Attend	<ul style="list-style-type: none"> • This event is suitable for any individual with an interest in managing or working in a component of a P3O; • Support staff who are looking for a formal qualification.
Prerequisites	There are no prerequisites for the course, however some exposure to portfolio, programme or project offices would be useful.
Course Content	<p>Foundation topics covered include: P3O Overview & Principles; P3O Models and Tailoring; Implementation of a P3O model; Tools and Techniques; Roles & Responsibilities.</p> <p>The Practitioner Seminar is scenario based, and focuses on the application of P3O under different programme environments and scenarios. Review and revision sessions of all P3O elements are included throughout the training.</p> <p>The Foundation exam is a multiple choice exam consisting of 50 questions that must be answered in 40 minutes. To be successful in this exam the delegate must correctly answer 30 or more questions. The Practitioner Exam is a 2¼ hour, open manual, scenario based multiple choice exam. The exam consists of 70 objective-style questions across 7 syllabus areas presented in the following styles: Classical multiple choice; Yes/No; Multiple Response; Matching; Sequencing; Assertion/Reason. The candidate must correctly answer 50% or more of the questions to pass the exam. We conduct the exams on behalf of APMG.</p> <p>There will be homework each evening.</p>
Included with the course	<p>The P3O Manual; Foundation Delegate Workbook including activities, discussions, quizzes and sample exams; Practitioner Delegate Workbook; Our P3O Desk Reference Chart; Foundation and Practitioner Exams; Lunch, and morning and afternoon refreshments; Post-course support, including access to our alumni-only resources.</p> <p>A pre-course pack consisting of the Pre-Course Reading Guide and the P3O Manual can be sent to participants who complete registration at least 10 days before scheduled course start. We do recommend that participants complete 10 - 12 hours of pre-course reading, but this is not mandatory.</p>
Delivery	Public or in-house classroom-style over 5 days. eLearning and blended offerings coming.
Availability	There is a public schedule of Foundation, Practitioner and Combined courses on our website.
Professional	PMI: 40 PDUs; AIPM: 30 CPD points